



MEGA FORTRIS  
G R O U P

## INDICATIVE SEAL MUD CRAB SEAL (MU) Pull-Tight Seal

***Neat and intricate seal design for tight securing and versatile application.***

Mud Crab Seal is innovatively designed with two versions available for different security requirements. It has a long and slim strap along with an intricate securing head to tightly secure high value items and gives a neat appearance after sealing. The seal structure is able to withstand rough handling in any application.

### Applications:

- Authentication Tagging
- Evidence Securing
- Investigation Tagging
- F&B



PREVENTION • PROTECTION • PEACE OF MIND

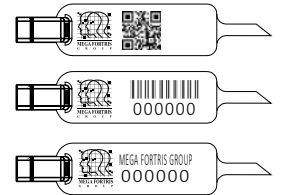


*The depicted seal is for illustration purposes only.*



Mud Crab Seal V2

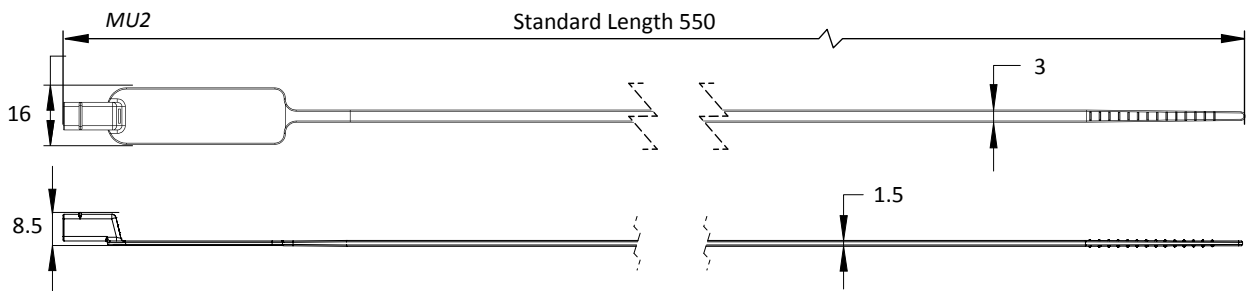
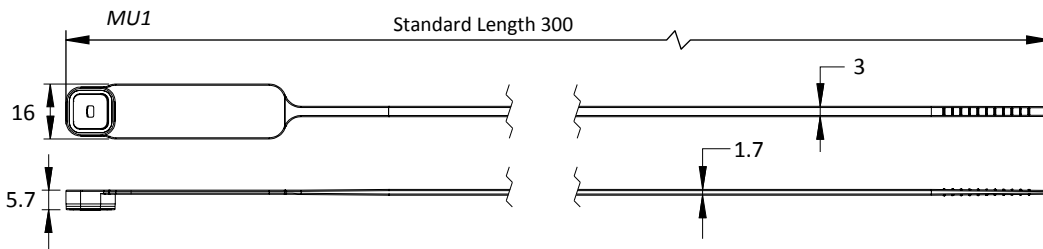
## LASER MARKING OPTION



## VIEW APPLICATION GIF



- 1 The Mud Crab Seal is moulded with Polypropylene (PP) material with metal lock encapsulated for one-way locking mechanism and clear tamper-evidence.
- 2 One-way locking mechanism is embedded in version 1 seal for fast and easy application; a crimping tool is required for the secure locking of version 2 seal.
- 3 Irreversible identifiers such as name, logo, barcode, serial number and QR code are laser-marked on the flap.
- 4 Biodegradable additives for plastic material are available.



## TECHNICAL SPECIFICATIONS

## PRODUCT - MUD CRAB SEAL (MU)

Code	Material	Locking Length	Locking Size	Tensile Strength	Marking Area	Max Marking Digits
MU1	Plastic : Polypropylene (PP) or Nylon (NY)	300 mm (12 in)	3.0 mm (0.1 in)	>25 kgf (>55.1 lbf)	12 x 43 mm (0.5 x 1.7 in)	Serial no : 8 Barcode : 8
MU2	Metal Jaw : Stainless Steel (SUS 304)	513 mm (20 in)		>10 kgf (>22.1 lbf)		

## PACKAGING

Carton	Quantity	Dimensions (mm)	Gross Weight (kg)	Volume (m <sup>3</sup> )	Standard Pastel Colours
MU1 Inner	1000	365 x 175 x 133 (14.4 x 6.9 x 5.2 in)	2.9 (6.39 lb)	0.008 (0.3 cu.ft.)	Body : <span>WH</span> <span>PSYL</span> <span>PSOR</span> <span>PSRD</span> <span>PSBL</span> <span>PSGN</span>
MU2 Inner		605 x 180 x 180 (23.8 x 7.1 x 7.1 in)	4.1 (9.04 lb)	0.02 (0.7 cu.ft.)	For colour customisations, kindly contact us for further information.

Updated Date : 17 August 2021