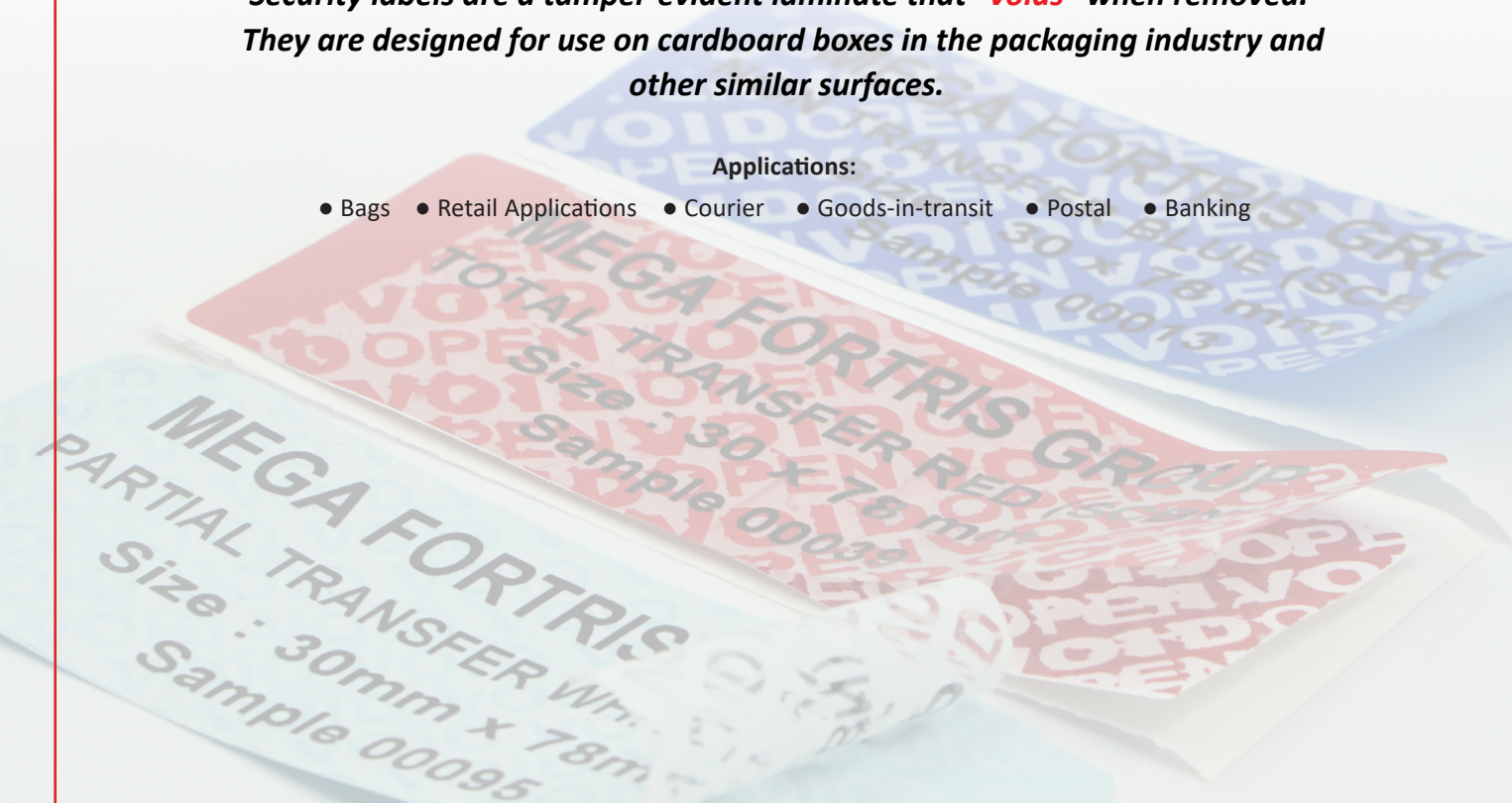


TAMPER-EVIDENT SECURITY LABELS

Security labels are a tamper-evident laminate that “voids” when removed. They are designed for use on cardboard boxes in the packaging industry and other similar surfaces.

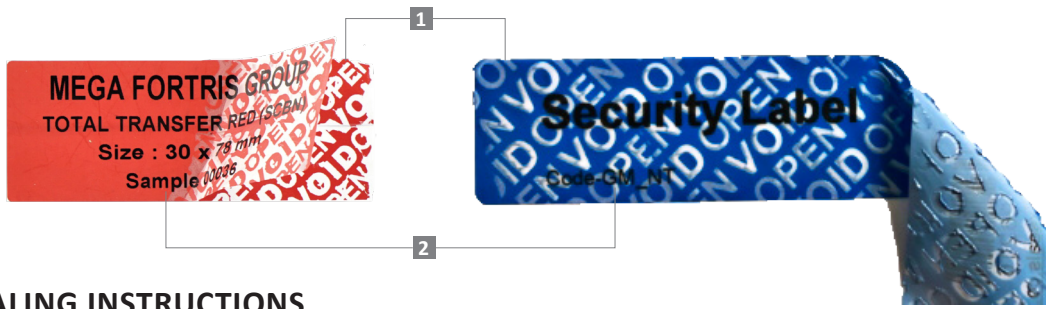
Applications:

- Bags
- Retail Applications
- Courier
- Goods-in-transit
- Postal
- Banking



PREVENTION · PROTECTION · PEACE OF MIND





VIEW APPLICATION GIF



SEALING INSTRUCTIONS

Attention :

It is important to observe and follow the proper sealing methods in order to achieve the optimum results.

- Clean the surface area where you want to apply the label using a clean and dry cloth with special attention for the following conditions :

Wet Conditions :
Using circular motions, wipe the surface repeatedly to ensure it is totally dry before applying the label.

Oily Conditions :
Using a clean cloth damped with a mild detergent, wipe the surface to remove all traces of oil and follow by a dry cloth before applying the label.

Dusty Conditions :
Using a clean and dry cloth, remove all surface dust or grime before applying the label.

Extreme Cold Conditions :
Using a clean and dry cloth, clean the surface by rubbing hard with circular motions, to remove all traces of frozen moist and immediately apply the label before a new layer of frost is formed.
- Using the same dry cloth, press the label firmly using sideways motion repeatedly, to remove all trapped air.

SUITABLE APPLICATION SURFACES

| Partial Transfer System | Non Transfer System | Total Transfer System |
|---|---|---|
| | | |
| <p>SPECIFICATIONS</p> <ul style="list-style-type: none"> - Does not leave a residue after removal. - Heat and freeze-resistant, and resistant to freon gas. | <p>SPECIFICATIONS</p> <ul style="list-style-type: none"> - Does not leave a residue after removal. - Heat and freeze-resistant, and resistant to freon gas. | <p>SPECIFICATIONS</p> <ul style="list-style-type: none"> - Does not leave a residue after removal. - Heat and freeze-resistant, and resistant to freon gas. |
| <p>TYPICAL APPLICATIONS</p> <ul style="list-style-type: none"> - Metal (Polished or Chrome Plated or Painted) - Smooth surfaced plastics (including PP) - Glass - Laminated surfaces - Fibre board - Corona treated plastic bags/sheets - Wood- Lacquered or painted - Oil-free rubber surface | <p>TYPICAL APPLICATIONS</p> <ul style="list-style-type: none"> - Metal (Polished or Chrome Plated or Painted) - Smooth & hard surfaced plastics (except PP) - Glass - Laminated surfaces | <p>TYPICAL APPLICATIONS</p> <ul style="list-style-type: none"> - Fibre board - Smooth surfaced plastics (including PP) - Glass - Laminated surfaces - Wood (lacquered or painted) |

Updated Date : 30 March 2022