

STORAGE SECURITY

MEGA CASINO BOX (MCAB)

Tamper-Evident Storage

High visibility and solid material for durability and operation efficiency.

Mega Casino Box is manufactured with high-impact plastic material for transparency and endurance during operation. It has a tamper-resistant slide-on security lid with one sealing latch to further secure the assets with security seals. The box is feasible and versatile for all kinds of asset.

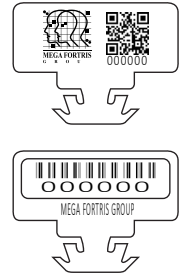
Applications:

- Casino & Gaming
- Evidence Securing
- Retail Applications
- Banking





LASER MARKING OPTION



VIEW APPLICATION GIF



- 1 Mega Casino Box is moulded with high-impact plastic materials to show clear tampering signs and withstand rough handling for multiple usage.
- 2 The slide-on lid is easy to apply and can be further secured either with cable barrier seals or plastic indicative seals.
- 3 The lid is designed with a space-saving nesting feature.
- 4 Irreversible identifiers such as name, logo, barcode, serial number and QR code can be laser marked on the recommended pairing seal, such as Triple Lock Casino Seal (TLCS) and Mega Tebco Chamber Seal (MTCS).
- 5 The box is available in two sizes to fit either two or eight decks of cards.

TECHNICAL SPECIFICATIONS

PRODUCT - MEGA CASINO BOX (MCAB)

Code	Material	Standard Dimensions	Weight	Marking Area
MCAB - 2	Plastic: High-impact Polycarbonate (PC)	100 x 70 x 45 mm (3.9 x 2.8 x 1.8 in)	112 g/sets (0.25 lb/sets)	Dependent on sticker size
MCAB - 8		150 x 70 x 95 mm (5.9 x 2.8 x 3.7 in)	112 g/sets (0.51lb/sets)	

PACKAGING

Carton	Quantity	Dimensions (mm)	Gross Weight (kg)	Volume (m ³)	Standard Colour
MCAB - 2 Inner	50	465 x 285 x 310 (18.3 x 11.2 x 12.2 in)	0.112 (0.25 lb)	0.041 (1.448 cu. ft.)	Body : TRNS
MCAB - 8 Inner	20	585 x 360 x 200 (23 x 14.2 x 7.9 in)	0.232 (0.5 lb)	0.042 (1.483 cu. ft.)	

Updated Date : 30 March 2022