

## INDICATIVE SEAL

### MM Seal (MMS)

#### Application Seal

***Ample security feature with delicate design for space saving security.***

MM Seal is a tamper-evident clip box seal delicately designed with space saving and all-inclusive security features. The seal is suitable for security bags installed with a specific chamber for enhanced security. It has a special breaking point for quick removal and to show clear evidence of tampering.

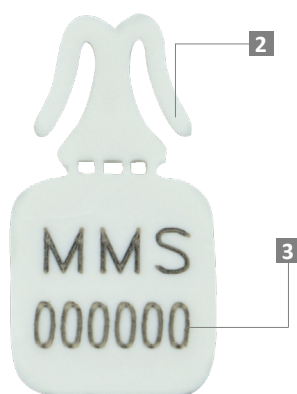
#### Applications:

- Authentication Tagging
- Evidence Securing
- Retail Applications
- Banking



PREVENTION • PROTECTION • PEACE OF MIND





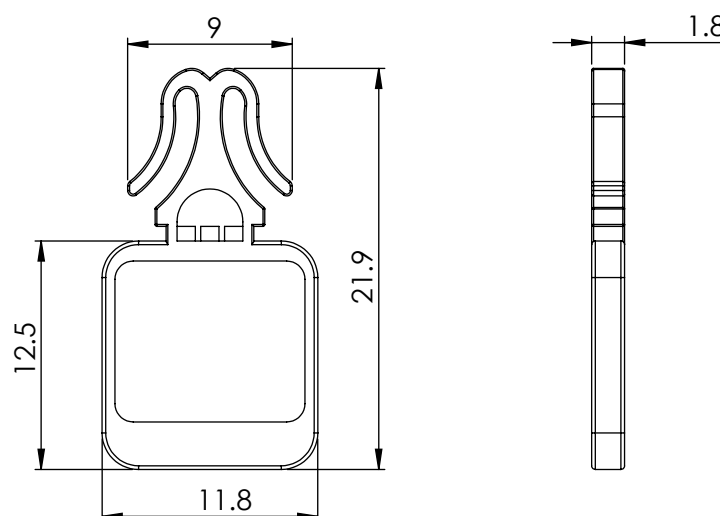
## LASER MARKING OPTION


 MEGA FORTRIS GROUP  
 000000

## VIEW APPLICATION GIF



- 1** The MM Seal is moulded with high-impact ABS material with a grip at the end for quick detection of breaking point and easy removal with clear evidence of tampering.
- 2** One-way snap-on locking mechanism of this seal allows for quick and tight sealing, as well as evidence of tampering or removal.
- 3** Irreversible identifiers such as name, logo, serial number and QR code are laser-marked on the body.
- 4** Colour coding is possible with a wide range of pastel colour options available for the seal.
- 5** Biodegradable additives for plastic material are available.



## TECHNICAL SPECIFICATIONS

## PRODUCT - MM SEAL (MMS)

Code	Material	Locking Length	Locking Size	Tensile Strength	Marking Area	Max Marking Digits
<b>MMS</b>	<b>Plastic:</b> High-impact Acrylonitrile Butadiene Styrene (ABS)	9 mm (0.36 in)	N/A	≤ 5 kgf	11.8 x 12.5 mm (0.46 x 0.49 in)	<b>Serial no : 6</b>

## PACKAGING

Carton	Quantity	Dimensions (mm)	Gross Weight (kg)	Volume (m³)	Standard Pastel Colours						
Inner	1000	125 x 125 x 50 (4.9 x 4.9 x 2 in)	0.3 (0.7 lb)	0.008 (0.283 cu. ft.)	Body :	WH	PSYL	PSOR	PSRD	PSBL	PSGN
For colour customisations, kindly contact us for further information.											

For colour customisations, kindly contact us for further information.

Updated Date : 30 March 2022