

## INDICATIVE SEAL

### FAST SEAL SP (FSSP)

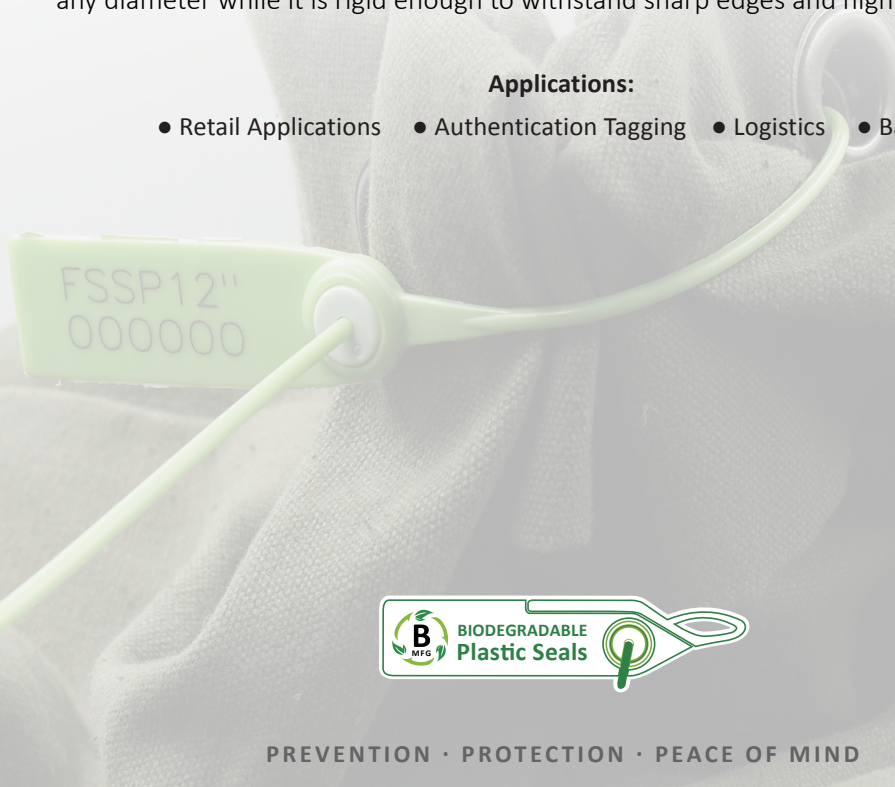
Pull-Tight Seal

***Concise identification on a larger flap for better tagging.***

Fast Seal SP is specially designed with a longer flap area and various strap length options to complement its different applications. The slim round strap makes it suitable for latches of any diameter while it is rigid enough to withstand sharp edges and high pull strengths.

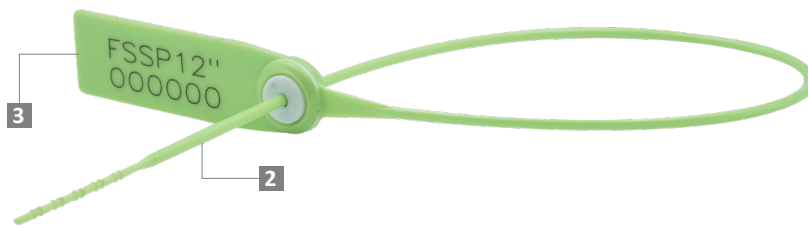
#### Applications:

- Retail Applications
- Authentication Tagging
- Logistics
- Banking



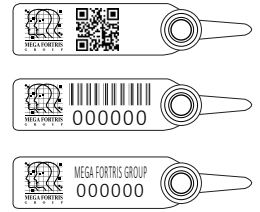
PREVENTION • PROTECTION • PEACE OF MIND



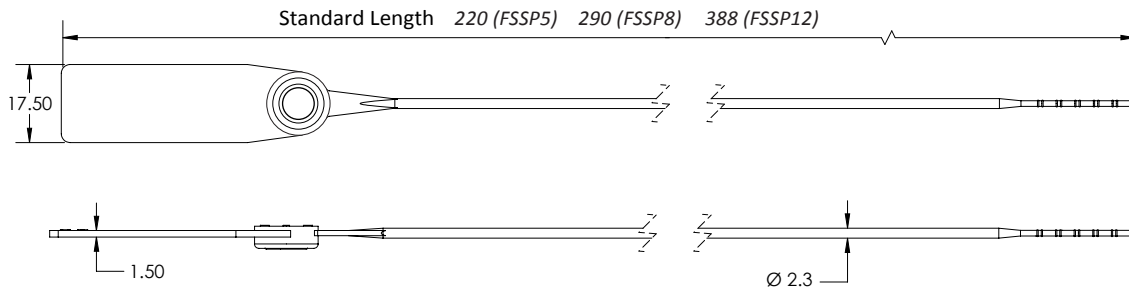


- 1 The Fast Seal SP is moulded with Polypropylene (PP) or high-impact Nylon (NY) material with the metal lock heat staking encapsulated for greater security and clear evidence of tampering.
- 2 One-way locking mechanism is embedded for fast and easy application.
- 3 The larger flap allows ample space for identifier marking. Irreversible identifiers such as name, logo, barcode, serial number and QR code are laser-marked on the flap.
- 4 Biodegradable additives for plastic material are available.
- 5 Different strap lengths are available to cater to different applications.

## LASER MARKING OPTION



## VIEW APPLICATION GIF



## TECHNICAL SPECIFICATIONS

## PRODUCT - FAST SEAL SP (FSSP)

Code	Material	Locking Length	Locking Size	Tensile Strength	Marking Area	Max Marking Digits
<b>FSSP5</b>	<b>Plastic :</b> Polypropylene (PP) Temperature Range: -5°C to 80°C	134 mm (5 in)	Ø 2.3 mm (0.1 in)	<b>PP:</b> ≥15 kgf (≥33.1 lbf) <b>NY:</b> ≥18 kgf (≥39.7 lbf)	14 x 34 mm (0.6 x 1.3 in)	<b>Serial no : 13</b> <b>Barcode : 12</b>
<b>FSSP8</b>	High-impact Nylon (NY) Temperature Range: -20°C to 80°C	204 mm (8 in)				
<b>FSSP12</b>	<b>Metal Jaw :</b> Stainless Steel (SUS 304)	302 mm (12 in)				

## PACKAGING

Carton	Quantity	Dimensions (mm)	Gross Weight (kg)	Volume (m³)	Standard Pastel / Solid Colours
<b>FSSP5</b> Inner	1000	279 x 225 x 190 (11.0 x 8.9 x 7.5 in)	2.65 - 3 (5.84 - 6.61 lb)	0.012 (0.4 cu.ft.)	<b>Polypropylene :</b> <b>Body :</b> <div><div>WH</div><div>PSYL</div><div>PSOR</div><div>PSRD</div><div>PSBL</div><div>PSGN</div></div> <b>Cap :</b> <div><div>TRNS</div><div>WH</div><div>MILKY (BIO)</div></div>
<b>FSSP8</b> Inner		450 x 195 x 165 (17.7 x 7.7 x 6.5 in)	2.85 - 3.4 (6.28 - 7.50 lb)	0.014 (0.5 cu.ft.)	<b>Nylon :</b> <b>Body :</b> <div><div>WH</div><div>B</div><div>YL</div><div>G</div><div>RD</div></div> <b>Cap :</b> <div><div>TRNS</div><div>WH</div><div>MILKY (BIO)</div></div>
<b>FSSP12</b> Inner			3.2 - 3.88 (7.05 - 8.55 lb)		

For colour customisations, kindly contact us for further information.

Updated Date : 3 August 2022