



**MEGA FORTRIS**  
G R O U P

## **INDICATIVE SEAL**

### **DRAGON SEAL (DS)**

Pull-Tight Seal

***Stronger seal structure for security in heavy duty.***

Dragon Seal features a series of strong indicative seals with a wide flap. It is rigid to withstand rough handling and has high pull strength endurance. This range of seals is durable and versatile for security and authentication purposes in any application.

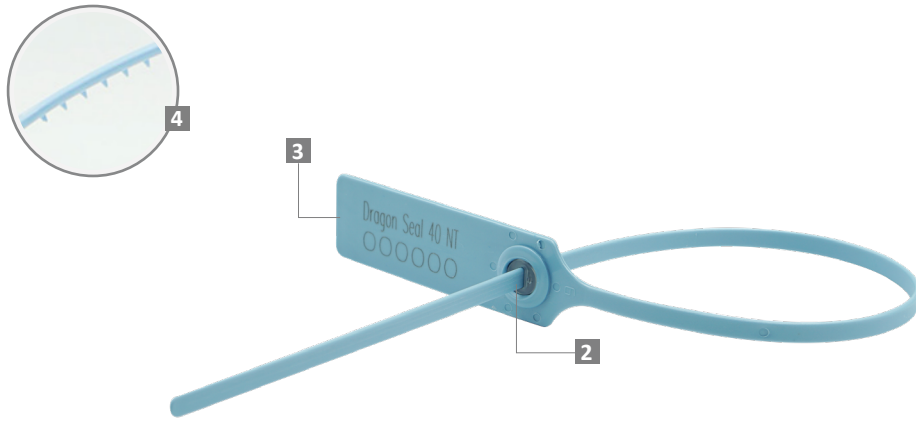
#### **Applications:**

- Retail Applications
- Postal Services
- Logistics
- Banking

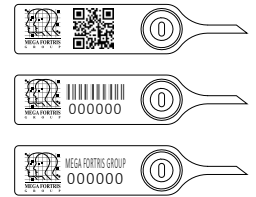


**PREVENTION · PROTECTION · PEACE OF MIND**





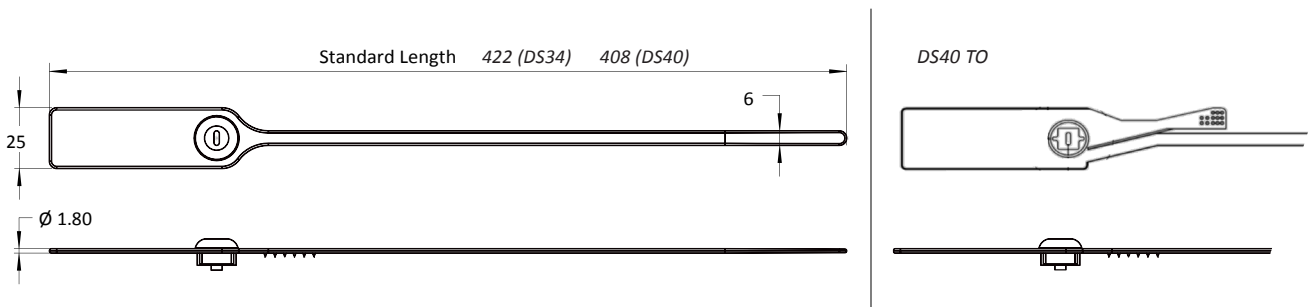
LASER MARKING OPTION



VIEW APPLICATION GIF



- 1 The Dragon Seal is moulded with Polypropylene (PP) material with the metal lock heat staking encapsulated to complement the long, thick strap.
- 2 One-way locking mechanism is embedded for fast and easy application.
- 3 The large flap allows ample space for identifier marking. Irreversible identifiers such as name, logo, barcode, serial number and QR code are laser-marked on the flap.
- 4 Spikes are placed behind the seal to provide better gripping on the application surface.
- 5 Biodegradable additives for plastic material are available.
- 6 Different strap lengths are available to cater to different applications.
- 7 Tear-off variation of DS40 is available for easy removal.



TECHNICAL SPECIFICATIONS

PRODUCT - DRAGON SEAL (DS)

Code	Material	Locking Length	Locking Size	Tensile Strength	Marking Area	Max Marking Digits
DS34	<b>Plastic :</b> Polypropylene (PP) <i>Temperature Range:</i> -5°C to 80°C	340 mm (13 in)	6.0 mm (0.2 in)	>35 kgf (>77.2 lbf)	21 x 56 mm (0.8 x 2.2 in)	<b>Serial no :</b> 14 <b>Barcode :</b> 13
DS40	<b>Metal Jaw :</b> Stainless Steel (SUS 304)	400 mm (16 in)				

PACKAGING

Carton	Quantity	Dimensions (mm)	Gross Weight (kg)	Volume (m <sup>3</sup> )	Standard Pastel Colours
DS34 Inner	1000	562 x 316 x 244 (22.1 x 12.4 x 9.6 in)	7.69 (16.95 lb)	0.043 (1.5 cu.ft.)	Body : <span>WH</span> <span>PSYL</span> <span>PSOR</span> <span>PSRD</span> <span>PSBL</span> <span>PSGN</span> Cap : <span>TRNS</span>
DS40 Inner			8.79 (19.38 lb)		<i>For colour customisations, kindly contact us for further information.</i>

Updated Date : 24 June 2022