



MEGA FORTRIS
G R O U P

HIGH SECURITY SEAL

MAXI CABLE LOCK 500 (MCL 500) & MEGA CABLE LOCK 500 2B (MCL 500 2B)

Pull-Tight Barrier Seal

Sleek and simple locking mechanism for high security standards.

Maxi Cable Lock 500 is a fully steel-made high-security cable seal designed to secure high-value assets.

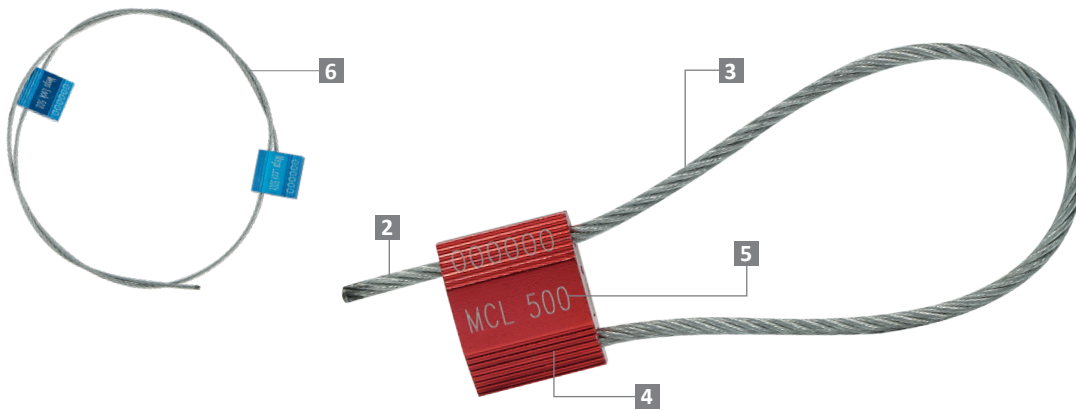
The Mega Cable Lock 500 2B version includes two locking bodies for a single length of wire. This version is designed for longer cable lengths and provides greater strength and security. Both versions comply to ISO 17712 and CTPAT with a precisely designed locking mechanism.

Applications:

- Containers
- Trucks
- Trailers
- Rail Cars

PREVENTION · PROTECTION · PEACE OF MIND



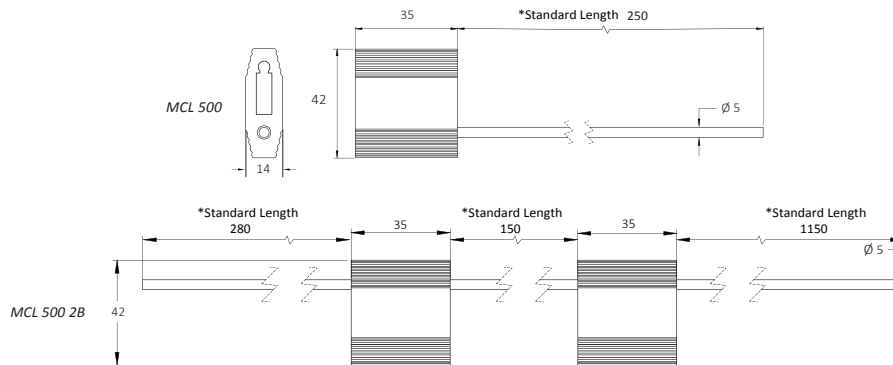


- 1 The Maxi Cable Lock 500 consists of an aluminium body and steel wire that is pulled to tightly secure high-value assets and provide clear tell-tale signs of tampering.
- 2 Mega Cable Lock 500 2B features two locking bodies and extra length steel wire for additional security and locking adaptability.
- 3 One-way locking mechanism is embedded for fast and easy sealing.
- 4 The non-preformed galvanised steel wire unravels upon cutting to show clear evidence of tampering.
- 5 The rib exterior of the aluminium body is designed to protect the laser markings during rough handling with anodisation of solid colour for colour coding.
- 6 Irreversible identifiers such as name, logo, barcode, serial number and QR code are laser-marked on the aluminium body.
- 7 The seal is designed, tested and certified ISO 17712:2013.

LASER MARKING OPTION



VIEW APPLICATION GIF



TECHNICAL SPECIFICATIONS

*Customisable cable length upon request.

PRODUCT - MAXI CABLE LOCK 500 (MCL 500) & MEGA CABLE LOCK 500 2B (MCL 500 2B)

Code	Material	Cable Length	Cable Diameter	Tensile Strength	Marking Area	Max Marking Digits
MCL 500	Body : Aluminium Cable : Galvanised Steel Wire	250 mm (9.8 in)	Ø 5.0 mm (0.2 in)	≥1000 kgf (≥2204.6 lbf)	14 x 30 mm (0.6 x 1.2 in)	Serial no : 7 Barcode : 8
MCL 500 2B		1580 mm (62.2 in)				

PACKAGING

Carton	Quantity	Dimensions (mm)	Gross Weight (kg)	Volume (m³)	Standard Colours
MCL 500 Inner	200	450 x 250 x 135 (17.7 x 9.8 x 5.3 in)	14.5 (32 lb)	0.015 (0.5 cu.ft.)	Body : G R B BK GD SC
MCL 500 2B Inner	40		TBC		

For colour customisations, kindly contact us for further information.

Carton size and weight vary according to cable length. Figures shown in the table are for the standard cable length packaging. Please contact us for additional details.

Updated Date : 23 June 2022