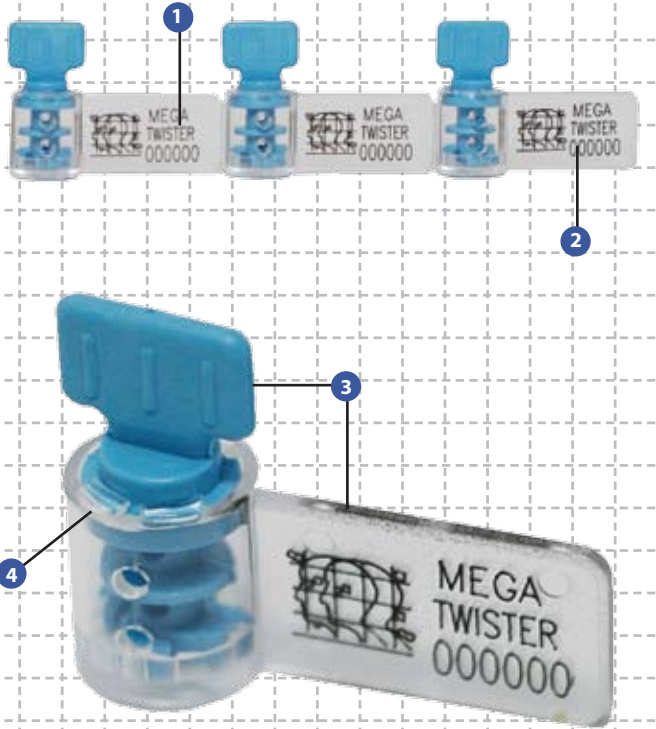


Mega Twister

PREVENTION. PROTECTION. PEACE OF MIND.

security seal



Cost-effective Easy Application Meter Seals

- 1 Mega Twister seals are etched with permanent laser marking. Laser marking offers the highest level of security as it cannot be removed and replaced.
- 2 The side flap area is etched with sequential numbering, logo or other customised marking for high security and easy identification.
- 3 Colour coding is possible by combinations of clear transparent body and multi-coloured twister.
- 4 Heat staking technology is used to permanently affix the twister in the seal body. This technology will leave clear evidence of tampering if the seal is cut or forced open.

Specifications

Product	Material	Locking Length	Wire Diameter	Pull Strength	Marking Area	Marking Digits
Mega Twister	Polycarbonate / ACETAL twister	15.0 cm or Customised (standard length)	1.2 mm	12 kg	1.0 x 2.0 cm	Max 11

Standard colours blue, green, red, white & yellow

INNER CARTON			OUTER CARTON			
Quantity	Dimensions mm	Weight kg/carton	Quantity	Dimensions mm	Weight kg/ carton	Volume m ³ /carton
1,000	296 x 191 x 127	2.3	5,000	668 x 308 x 216	12	0.04444

Durable plastic and wire utility seal

The Mega Twister is a high-quality and cost-efficient sealing solution for all kinds of meters.

The Mega Twister is available in Polycarbonate with an Acetal tab in a variety of colours.

The non-flammable High Impact ABS plastic provides excellent bar-coding contrast.

Typical applications for the Mega Twister include utility meters, scales, gasoline pumps, drums and totes.

Mega Twister seals are supplied in mats of five with

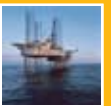


tear-off mechanism which make the seal easy to handle and control.

Be assured of better security with our innovative use of materials and industrial design.



ISO 9001:2000
Design, Manufacture and
Supply of Security Seals



- AFRICA
- AUSTRALIA
- CHINA
- DENMARK
- FRANCE
- HONG KONG
- HUNGARY
- INDONESIA
- MALAYSIA
- NEW ZEALAND
- PHILIPPINES
- SINGAPORE
- TAIWAN
- THAILAND
- UK
- USA

