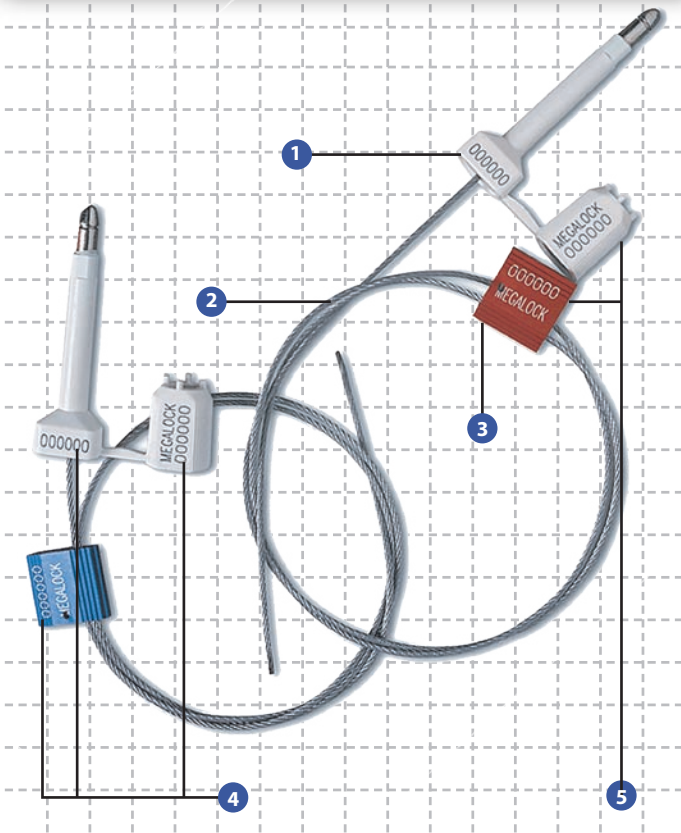


# Mega Lock

PREVENTION. PROTECTION. PEACE OF MIND.

## high-security seal



### Double security barrier seal

- 1 The 2 self-locking mechanisms are easily locked by hand.
- 2 The Mega Lock can only be removed by a strong cutter. It takes two cuts to open the Mega Lock seal.
- 3 The Mega Lock can be colour coded to suit individual requirements. The cable locking body can be anodized in 5 standard colours and the bolt seal is moulded with high impact ABS in a range of 5 different colours.
- 4 Customized marking is etched on the two locking bodies with permanent laser technology. Identical serial numbers, logo and bar codes can be marked on all three parts of the seal if required.
- 5 The Mega Lock is also known as the "synergy seal". The solid combination of two proven barrier seals provides higher security than when the seals are used separately.

### Specifications

Product	Material	Locking Length	Diameter	Marking Area	Marking Digits
Mega Lock	Aluminium body & ABS coated bolt seal with mild steel wire	112.0 cm or customised	Cable: Ø 2.4 mm Bolt: Ø 9.0 mm	Body: 2.0 x 2.0 cm Pin: 7 x 16 mm Bush: 10 mm x 24 mm	Max 10
	<b>Carton Quantity</b>	<b>Dimensions mm</b>	<b>Weight kg/carton</b>	<b>Volume m<sup>3</sup>/carton</b>	<b>Standard colours</b>
	Carton size/weight will vary according to customised cable lengths. Please contact us for details.				Cable Lock: Red, Green, Black, Blue & Gold Klicker bolt: Blue, Green, Yellow, Red & White

### Description

The Mega Lock provides the proven security features and strength of the Cable Lock seal (MCL250) and the Klicker bolt seal. Both these seals are used individually worldwide to protect high valuable goods during transport in containers and trucks.

The Mega Lock boasts a combination of solid materials: rust proof aluminium body, a strong steel cable combined with a mild steel bolt and barrel moulded with high impact ABS. The synergy between the strong

materials and an innovative tamper evident design makes the Mega Lock uniquely secure.

For further details on the Mega Lock, please see the description of the Klicker seal and Cable Lock (MCL250) seal.

**Be assured of better security with our innovative use of materials and industrial design.**



MEGA FORTRIS



ISO 9001:2000  
Design, Manufacture and Supply of Security Seals



- AFRICA
- AUSTRALIA
- CHINA
- DENMARK
- FRANCE
- HONG KONG
- HUNGARY
- INDONESIA
- MALAYSIA
- NEW ZEALAND
- PHILIPPINES
- SINGAPORE
- TAIWAN
- THAILAND
- UK
- USA