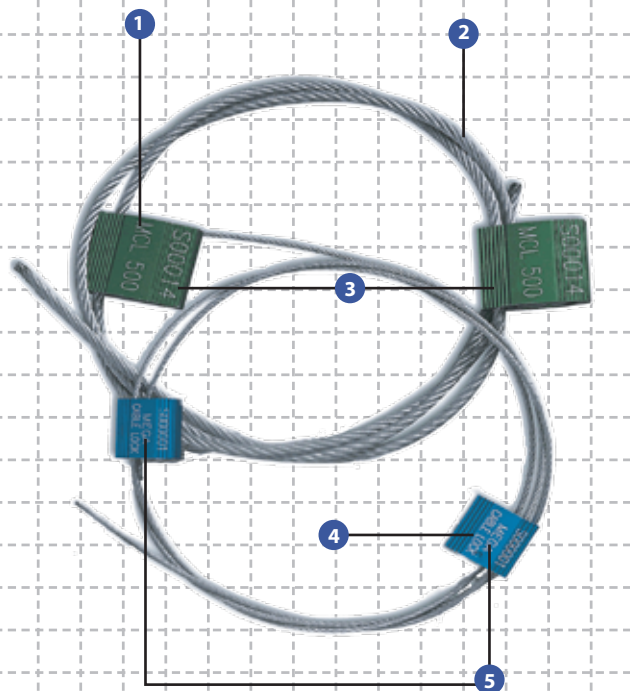


# Mega Cable Lock

PREVENTION. PROTECTION. PEACE OF MIND.

## high-security seal



ISO/PAS17712 Compliant  
C-TPAT Compliant

## Double security barrier seal

- 1 Self-locking mechanisms are easily locked by hand.
- 2 The Mega Cable Lock can only be removed by two cuts with a strong cable cutter.
- 3 Two rust proof aluminium bodies with embedded locking mechanisms and a strong steel cable provide high barrier security for trucks and containers.
- 4 The Mega Cable Locks are etched with permanent laser marking. Laser marking offers the highest level of security as it cannot be removed and replaced.
- 5 The Mega Cable Lock is marked with serial numbers, logo, bar code and/or customer name. The seal's two locking bodies can be etched with identical information or according to customer requirements.

## Specifications

Product	Material	Locking Length	Cable Diameter	Pull Strength	Marking Area	Marking Digits
Mega Cable Lock 250	Aluminium body, mild steel wire	125.0 cm	Ø 2.4 mm	+550 kg	2.0 x 2.0 cm	Max 10
Mega Cable Lock 300	Aluminium body, mild steel wire	or customised	Ø 3.0 mm	+900 kg	3.0 x 3.0 cm	Max 15
Mega Cable Lock 500	Aluminium body, mild steel wire		Ø 5.0 mm	1,500 kg	3.0 x 3.6 cm	Max 15
Mega Cable Lock 300SP	Aluminium body, mild steel wire		Ø 3.0 mm to 3.5 mm	1,300 kg	3.0 x 3.0 cm	Max 10

Carton Quantity	Dimensions mm	Weight kg/carton	Volume m <sup>3</sup> /carton	Standard colours
				Cable Lock: Red, Green, Black, Blue & Gold

Carton size/weight will vary according to customised cable lengths. Please contact us for details.

## Description

The Mega Cable Lock has been designed to provide additional security for valuable goods in transport.

The Mega Cable Lock is mainly used for shipping containers and trucks. The flexible design makes it suitable for most applications that would otherwise require two strong seals to be secured.

The seal provides the security of 2 cable barrier seals in one. One Mega Cable Lock seals the latch AND the bars

on containers and trucks. Unlike normal cable seals, the Mega Cable Lock must be cut twice to be removed.

With the Mega Cable Lock in its proper place, the doors of a container or truck cannot be opened without cutting both parts of the Mega Cable Lock or removing both doors at the same time.

Be assured of better security with our innovative use of materials and industrial design.



MEGA FORTRIS



ISO 9001:2000  
Design, Manufacture and  
Supply of Security Seals



- AFRICA
- AUSTRALIA
- CHINA
- DENMARK
- FRANCE
- HONG KONG
- HUNGARY
- INDONESIA
- MALAYSIA
- NEW ZEALAND
- PHILIPPINES
- SINGAPORE
- TAIWAN
- THAILAND
- UK
- USA