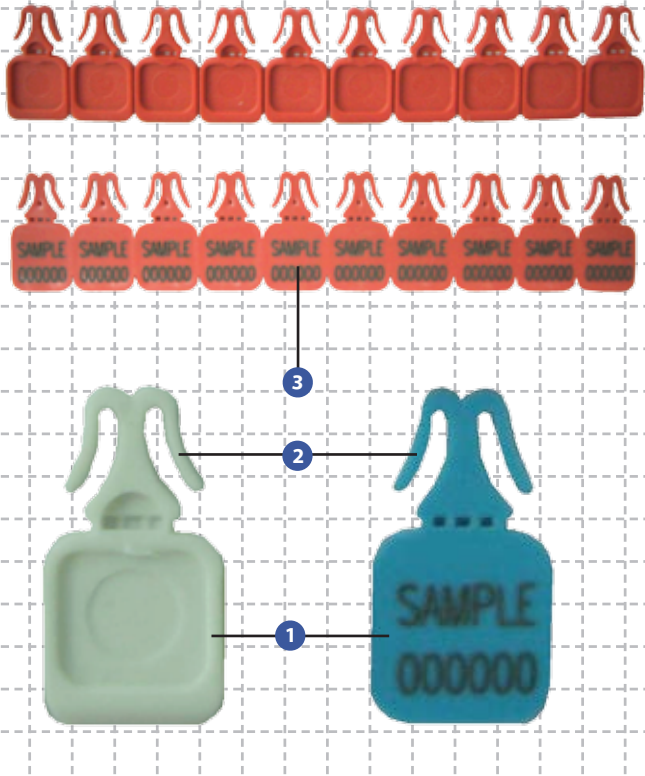


MM Seal

PREVENTION. PROTECTION. PEACE OF MIND.

security box



Tamper Evident Vault Seal

- 1 The MM Seal is quick and convenient to apply, and can be removed manually without a cutting tool.
 - 2 The MM Seal features a Double Click locking mechanism for greater security and tamper-resistance.
 - 3 MM Seal are etched with permanent laser marking for name, logo and sequential numbers.
- The white flap is attached to the body via a Ultrasonic process. Ultrasonic technology is used to permanently affix the white flap in the Mega Casino Seal_BC body. The white flap area is etched with sequential numbering, logo and barcode.

Specifications

Product	Material	Marking Area	Carton Quantity	Dimensions mm	Weight kg/carton	Volume m3/carton
MM Seal	ABS	8mm x 8mm	1,000	12mm W x (12mm + 10mm) 22mm L	0.34	0.00078

Standard Colours - red, yellow, green, white and blue

A Secured Solution

This MM Seal is designed for the sealing of plastic containers and bag chambers.

These containers and bags are generally used in the Casino Financial Services & Banking, Retail and Police Sectors.

It has a locking depth of 10mm (0.39in) and is suitable for use in temperatures ranging from -20°C to 80°C (-4°F to 176°F)



Be assured of better security with our innovative use of materials and industrial design.



MEGA FORTRIS



ISO 9001:2000
Design, Manufacture and
Supply of Security Seals



- AFRICA
- AUSTRALIA
- CHINA
- DENMARK
- FRANCE
- HONG KONG
- HUNGARY
- INDONESIA
- MALAYSIA
- NEW ZEALAND
- PHILIPPINES
- SINGAPORE
- TAIWAN
- THAILAND
- UK
- USA