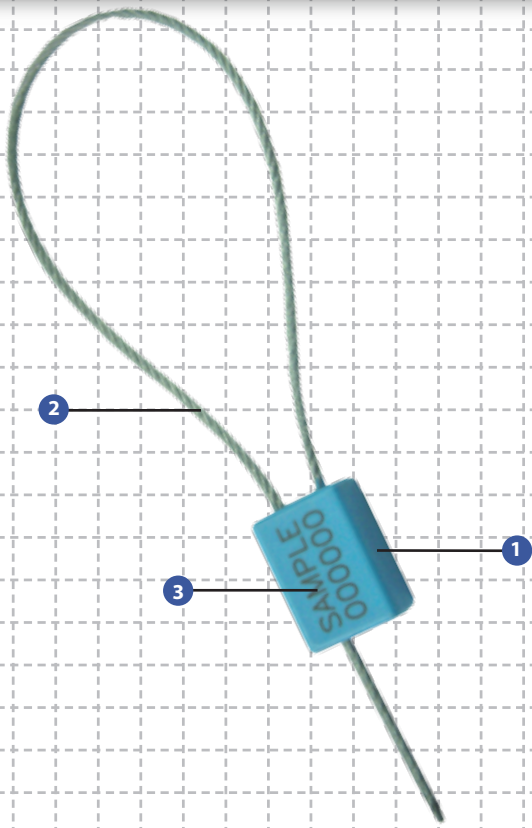


MCL 180

PREVENTION. PROTECTION. PEACE OF MIND.



Affordable Cable Barrier seals

- 1 Moulded with a high-impact ABS material with a galvanized wire cable. The high-resilient ABS material does not break easily but will clearly show evidence of tampering.
- 2 One end of the cable is permanently secured into the locking body. The other end is fastened with a click lock mechanism that provides fast and easy sealing.
- 3 The MCL 180 is etched with permanent laser marking. Laser marking offers the highest level of security as it cannot be removed and replaced.

Specifications

Product	Material	Locking Length	Cable Diameter	Pull Strength	Marking Area	Marking Digits
MCL 180 (Pull Tight)	ABS Body	18 cm	1.8 mm x 180 mm	150 kgs	20mm x 14mm	6 digits
	Carton Quantity	Dimensions mm	Weight kg/carton	Volume m ³ /carton	Standard colours	
	500 pcs	300 x 280 x 170	4.9 kgs	0.01428	Blue, green, red, orange, white & yellow	

Cost-effective cable seal

The MCL 180 are very user-friendly and highly tamper evident. This seal can be applied to secure various applications for a range of security requirements.

The seals are secured as soon as the wire is clicked into place with the locking mechanism.

Mega MCL 180 are widely used on trucks, tanker trucks, air cargo containers, shipping containers, rail cars, calibrators and valves.



Be assured of better security with our innovative use of materials and industrial design.



MEGA FORTRIS



ISO 9001:2000
Design, Manufacture and Supply of Security Seals



- AFRICA
- AUSTRALIA
- CHINA
- DENMARK
- FRANCE
- HONG KONG
- HUNGARY
- INDONESIA
- MALAYSIA
- NEW ZEALAND
- PHILIPPINES
- SINGAPORE
- TAIWAN
- THAILAND
- UK
- USA