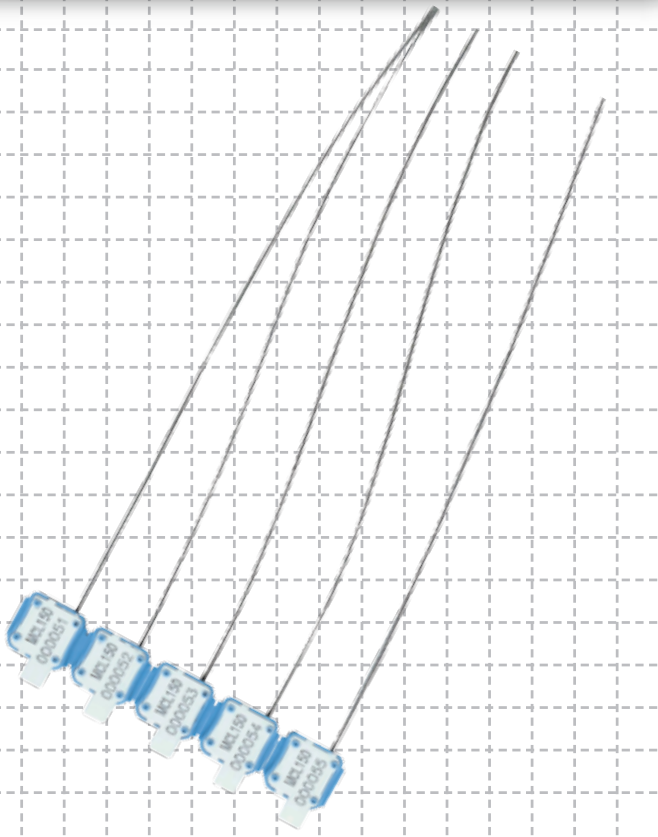


MCL 150

PREVENTION. PROTECTION. PEACE OF MIND.



Barrier seal

- 1 The MCL 150 seal is made of high impact ABS plastic material. The base is available in various colours and is ultrasonically welded to the white cap.
- 2 The MCL 150 can only be removed by a strong cable cutter. Once cut the cable will splay, increasing security.
- 3 The caps are etched with permanent laser marking. Laser marking offers the highest level of security as it cannot be removed and replaced.
- 4 The MCL 150 can be marked with serial numbers, logo, and barcode and/or customer name. The seal bodies can be etched with identical information or according to customer requirements.

Specifications

Product	Material	Locking Length	Cable Diameter	Pull Strength	Marking Area	Marking Digits	
MCL 150	Hi - ABS body, steel locking mechanism with 1.5mm dia non - preformed galvanized steel cable	18 cm	Ø 1.5 mm	100 kg	Cap area: 13 mm X 10 mm	8	
INNER CARTON Quantity	Dimensions mm	Weight kg/carton	Volume m ³ /carton	OUTER CARTON Quantity	Dimensions mm	Weight kg/carton	Volume m ³ /carton
1,000	300 x 270 x 160	5.1	0.01296	18,000	930 x 800 x 340	93	0.25296

Description

The MCL 150 is a variable length cable seal providing security through its unique locking mechanism and cable design.

It can be used to secure all types of goods in transit. The flexible design makes it suitable for most applications.

Be assured of better security with our innovative use of materials and industrial design.



- AFRICA
- AUSTRALIA
- CHINA
- DENMARK
- FRANCE
- HONG KONG
- HUNGARY
- INDONESIA
- MALAYSIA
- NEW ZEALAND
- PHILIPPINES
- SINGAPORE
- TAIWAN
- THAILAND
- UK
- USA



MEGA FORTRIS



ISO 9001:2000
Design, Manufacture and
Supply of Security Seals

