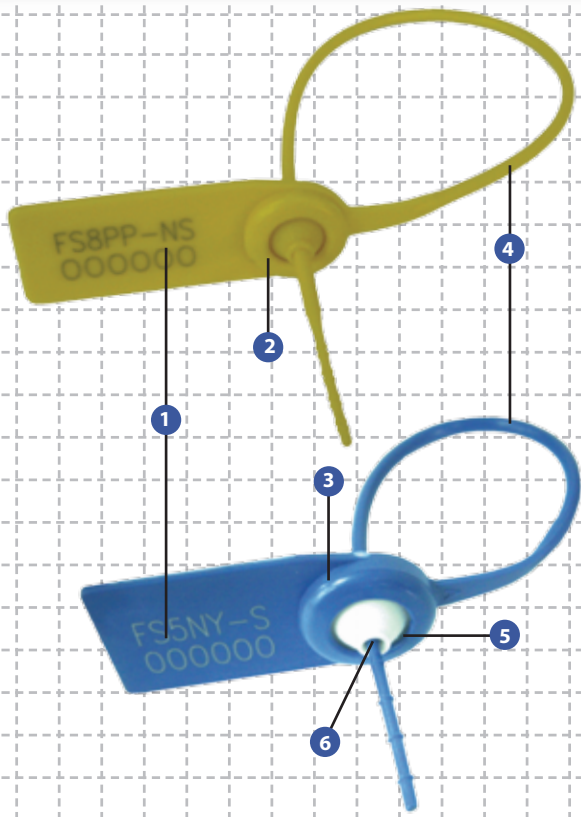


Fast Seal

PREVENTION. PROTECTION. PEACE OF MIND.

indicative seal



Versatile seal with metal locking

- 1 The Fast Seals are etched with permanent laser marking. Laser marking offers the highest level of security as it cannot be removed and replaced.
 - 2 Heat staking technology is used to permanently fix the cap to the Fast Seal. Heat staking is too strong to be cut or forced open without leaving clear evidence of tampering.
 - 3 Metal clip locking provides greater pull strength to the thin and flexible strap.
 - 4 Durable Nylon or PP securing strap gives the user a choice of strength to match different applications.
 - 5 Colour coding is made possible by using combinations of white-based seals and multi-coloured caps.
 - 7 A floating metal clip is securely shielded by a cap, providing great locking strength and security.
- The Fast Seals are supplied in mats of ten for ease of handling and control.

Specifications

Product	Material	Locking Length	Strap Diameter	Pull Strength	Marking Area	Marking Digits		
Fast seal 5"	Polypropylene Nylon	11 cm 11 cm	ø 2.3 mm ø 2.3 mm	13 kg 19 kg	Flap: 1.3 x 1.8 cm Flap: 1.3 x 1.8 cm	Max 8 Max 8		
Fast seal 8"/10"/12"	Poplypropylene Nylon	20 cm / 25 cm / 30 cm 20 cm / 25 cm / 30 cm	ø 2.3 mm ø 2.3 mm	15 kg 25 kg	Flap: 1.3 x 2.5 cm Flap: 1.3 x 2.5 cm	Max 9 Max 9		
INNER CARTON		OUTER CARTON						
Quantity	Dimensions mm	Weight kg/carton	Volume m ³ /carton	Quantity	Dimensions mm	Weight kg/carton	Volume m ³ /carton	
Fast seal 5"	1,000	275 x 225 x 155	2.20	0.00959	5,000	805 x 282 x 240	11.76	0.05448
Fast seal 8"	1,000	350 x 225 x 185	2.68	0.01457	5,000	1160 x 355 x 195	14.02	0.08030
Fast seal 10"	1,000	385 x 210 x 215	3.10	0.01738	5,000	1090 x 396 x 225	16.44	0.09712
Fast seal 12"	1,000	450 x 210 x 215	3.52	0.02032	5,000	1070 x 458 x 225	18.74	0.11026

Standard colours yellow, blue, white, red & green
Base colour for colour coding is white with caps in the above colours.

The PP / Nylon Difference

The Fast Seal is a relatively strong seal despite its small dimensions. This is partly due to the metal locking mechanism, which secures the seal.

The Fast Seals are available in either Polypropylene (PP) or Nylon. The characteristics of Nylon material make it stronger and with better pull strength than PP material.

The Fast Seals are easy to use for all applications with small sealing facilities e.g. cassettes for ATM machines and money boxes on which the Fast Seals are widely utilised.

Be assured of better security with our innovative use of materials and industrial design.



MEGA FORTRIS



ISO 9001:2000
Design, Manufacture and
Supply of Security Seals



- AFRICA
- AUSTRALIA
- CHINA
- DENMARK
- FRANCE
- HONG KONG
- HUNGARY
- INDONESIA
- MALAYSIA
- NEW ZEALAND
- PHILIPPINES
- SINGAPORE
- TAIWAN
- THAILAND
- UK
- USA