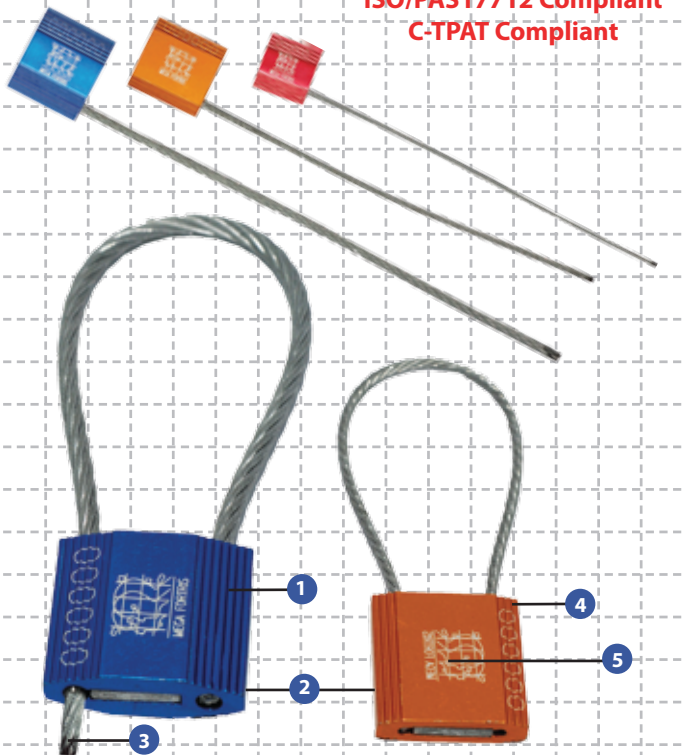


# Cable Lock

PREVENTION. PROTECTION. PEACE OF MIND.

## high-security seal

ISO/PAS17712 Compliant  
C-TPAT Compliant



## Strong adjustable Barrier & Semi Barrier seals

- 1 Parts of the exterior have been designed with a rib pattern, which protects the markings during rough handling.
- 2 The one-way locking mechanism provides fast and easy sealing.
- 3 One end of the cable is permanently secured into the locking body.
- 4 The Cable Lock is anodised in solid colours, which accommodate customised laser marking. Anodising also makes colour coding possible and eases identification from a distance.
- 5 All Cable Locks are etched with permanent laser marking. Laser marking offers the highest level of security as it cannot be removed and replaced.

## Specifications

Product	Material	Cable Length	Cable Diameter	Pull Strength	Marking Area	Marking Digits
Cable Lock 250	Aluminium body, mild steel wire	18.0 cm	Ø 2.4 mm	500 kg	Body: 2.0 x 2.0 cm	Max 10
Cable Lock 300	Aluminium body, mild steel wire	20.0 cm	Ø 3.0 mm	1,000 kg	Body: 3.0 x 3.0 cm	Max 15
Cable Lock 500	Aluminium body, mild steel wire	25.0 cm	Ø 5.0 mm	1,500 kg	Body: 3.0 x 3.6 cm	Max 15
Cable Lock 300SP	Aluminium body, mild steel wire	20.0 cm	Ø 3.0 mm to 3.5 mm	1,300 kg	Body: 3.0 x 3.0 cm	Max 10

*Standard – customized lengths available*

	Carton Quantity	Dimensions mm	Weight kg/carton	Volume m <sup>3</sup> /carton	Standard colours
MCL250 x 18	500	300 x 270 x 160	11.0	0.01296	black, blue, gold, green & red
BCL300 x 20	300	300 x 270 x 160	12.0	0.01296	
MCL500 x 25	150	300 x 270 x 160	11.2	0.01296	
BCL300SP x 20	200	300 x 280 x 170	11.2	0.01428	

## Description

The Cable Locks are very user-friendly and highly tamper evident. They are available with different cable diameters to secure various applications with different security requirements.

The seals are secured as soon as the wire has passed through the one-way locking mechanism. The wire must be adjusted to fit tightly to the application to maximize security and to prevent tampering.

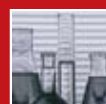
Cable Locks are widely used on trucks, tanker trucks, air cargo containers, shipping containers, rail cars, calibrators and valves.



Be assured of better security with our innovative use of materials and industrial design.



ISO 9001:2000  
Design, Manufacture and Supply of Security Seals



- AFRICA
- AUSTRALIA
- CHINA
- DENMARK
- FRANCE
- HONG KONG
- HUNGARY
- INDONESIA
- MALAYSIA
- NEW ZEALAND
- PHILIPPINES
- SINGAPORE
- TAIWAN
- THAILAND
- UK
- USA



MEGA FORTRIS